



West Point | ASSOCIATION OF GRADUATES

2023-2024 Annual Report for MG and Mrs. Alan B. Salisbury

- Cadet Glee Club Endowment
- Egner Hall Fund

The reporting period covered in this report represents 2022 endowment distributions and gift funds proffered to USMA for Margin of Excellence programs during Academic Year 2023-2024 or available for WPAOG programs and projects during calendar year 2023.

S100B CADET GLEE CLUB ENDOWMENT

Endowment Performance Report As of 12/31/2023

Endowment Description

The purpose of this endowment is to provide ongoing support for the Glee Club in order to enhance the quality of the experience that the club provides to cadets. Funds from this endowment maybe used to cover, but are not limited to, the costs of travel, performances and events, and performance or rehearsal related materials, as well as staffing and the administrative experiences associated with the Glee Club.

Distribution Taken in AY 23-24\$31,959
Endowment Balance\$894,510
Distribution Available for AY 24-25\$33,936

The endowments of WPAOG are invested under the direction of the Association’s Investment Committee, using policy guidelines established by the Board of Directors. The Committee retains professional investment management consultants and allocates assets to various investment managers and asset classes to minimize risk. For the year ending December 31, 2023, the investment returns of WPAOG were lower than our related benchmarks, while the cumulative three years and five years returns were favorable to those benchmarks. For more information on how WPAOG manages and invests endowments, see the WPAOG Investments Overview.



DEPARTMENT OF THE ARMY
UNITED STATES MILITARY ACADEMY
West Point, New York 10996

AY 2023/2024

Dear MG and Mrs. Alan B. Salisbury USA, Retired:

West Point Glee Club completed a year of exceptional "firsts" and collaborations, beginning in October with Fort Worth Symphony Orchestra in a concert of original video game music. The conductor shared these remarks on social media:

Greetings. My name is Andy Brick. I am the principal conductor and music director of GameON! Last night I had the pleasure of performing with the West Point Glee Club in a concert with the Fort Worth Symphony in Ft. Worth, Texas. Beyond their wonderful musical performance, I would like to tell you I have never met a group of young people that have carried themselves with such decorum and respect while still holding onto the joyful spirit of their youth. I can sincerely tell you without exaggeration that knowing these young men and women represent the future of our country brings hope and confidence. Bravo to you all.

In March the Glee Club traveled to Greece for its first-ever overseas Spring Break Concert Tour. Cadets and five staff members engaged in international diplomacy and cultural immersion with concerts at The Hall of the Great Club of Kavala, The Municipal Conservatory of Larissa, and The American College of Athens. Tours and free time exploring Thessaloniki, Volos, Athens and environs, and a significant briefing with the U.S. Military Attaché to Greece prior to his attendance at the final concert rounded out an incredible week of lifelong memories and friendships.

The Club premiered two commissioned works this season. Cadets presented Dr. Ellen Gilson Voth's three-movement "Lands that draw me home" with a West Point Band chamber ensemble to great acclaim at the American Choral Directors Association Eastern Division Conference in Providence, RI, in a Conference Headliner Concert—another first—with the US Army Field Band Soldiers' Chorus. They previewed portions of the program at a joint "Tribute to American Heroes" concert at St. Patrick's Cathedral, New York City. The director also commissioned "Three Folks Songs" from Greek American arranger Dorothy J. Papadakos for the tour to Greece. The cadets surprised and delighted audiences by singing popular tunes in Greek and dancing the Sirtaki.

The Glee Club concluded a two-year collaboration with CantaNOVA of Ramapo College, NJ, with a performance of Howard Hanson's Song of Democracy and other selections with the New Jersey Wind Symphony to a full house in Ridgely, NJ, just two weeks after returning from Greece. In January, a small group was privileged to join the West Point Alumni Glee Club at Washington National Cathedral for a moving Vietnam War 50th Celebration of Character and Courage. The Nightcaps and Nightingales were hosted by American Airlines, the USO, and Gary Sinise to honor Veterans with a trip to Las Vegas for Veterans Day. They also presented a community concert in Belvidere, NJ, in April. In late May twelve cadets will participate in a Joint Service Academy Glee Club trip to Normandy for the 80th Anniversary of D-Day. Also sponsored by American Airlines, the cadets and their counterparts will perform music of the era and visit historic landmarks on this significant anniversary while escorting WWII Veterans throughout the entire trip.

The cited events are highlights of a year that included roughly thirty Glee Club performances and events, not counting additional National Anthems for USMA events. The Club is supported and mentored by COL Julia Coxen, Officer-in-Charge, and a team of eight Assistant Officers-in-Charge. Membership in the club hovered just below fifty this season. The Class of 2024 marks the end of “pandemic” classes; it is the only class to audition online and sing their entire Plebe year in masks. By graduating only six, we are poised to return to pre-pandemic numbers next fall.

The new capabilities afforded by the completed renovation of the Glee Club’s state-of-the-art rehearsal and recording suite in Egner Hall forecast a transformational year ahead. The Club worked in the space for the first time on May 7, performing a variety of repertoire as acousticians, audio engineers, and the director tuned the custom electro-acoustical system to its requirements. Lest there be any doubt as to the enhancement this brings the Club, after two hours we had to insist the cadets stop singing and depart so the engineers could complete their tasks and leave!

It is entirely due to your generosity that Glee Club cadets are able to experience such an incredible range of challenge, learning, collaboration, performance, and travel while reaching diverse national and international audiences with the West Point story. “Thank you” is wholly inadequate. Nonetheless, we thank you sincerely for your investment in the cadets and the Glee Club program. Your giving makes a huge difference.

With sincere gratitude,

A handwritten signature in black ink that reads "Constance Chase". The script is fluid and cursive, with the first letter of each name being capitalized and prominent.

Constance Chase, BM, MA
Director, West Point Glee Club

S100B

Dear MG(R) and Mrs. Salisbury,

Thank you so much for your continuous contributions to the Cadet Glee Club! While I'm sure some of the repertoire has changed since you were a cadet in 1958, the joy that we continue to bring audiences around the globe is apparent. Thank you for commissioning pieces such as Land that draws me home, so that we may sing great music at every performance!

GO ARMY GLEE!

Very Respectfully,
CDT Cavan O'Hara













XX C-36

ALETHEA
HOUGH

HIS WIFE

JUN 19 1915

JAN 26 1983



west.point.glee.club 2h

...



CONCERT COMPLETE!





West Point

ASSOCIATION OF GRADUATES

Dear General and Mrs. Alan B. Salisbury,

On behalf of the West Point Association of Graduates, I would like to express my appreciation for your generosity and support of the Egner Hall Renovation Project.

We started construction in November 2022, and we will be moving back into the building in April of 2024. This project renovated the space to support the Glee Club and the West Point Band. The project upgraded the areas utilized by these departments to acoustically accommodate the skills of the people performing in them. The project is also benefitting necessary infrastructure required to make these upgrades.

Enclosed are the current pictures of Egner Hall. The first is the Glee Club room and the second the Band Room.

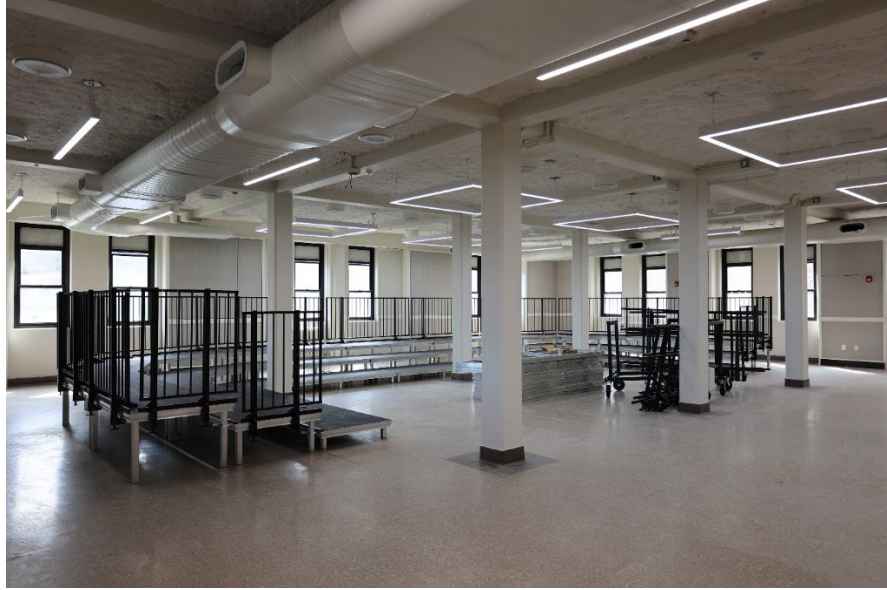
On behalf of the West Point Association of Graduates, I would once again like to thank you for your continued generosity and steadfast support of the WPAOG and the United States Military Academy at West Point.

Sincerely,

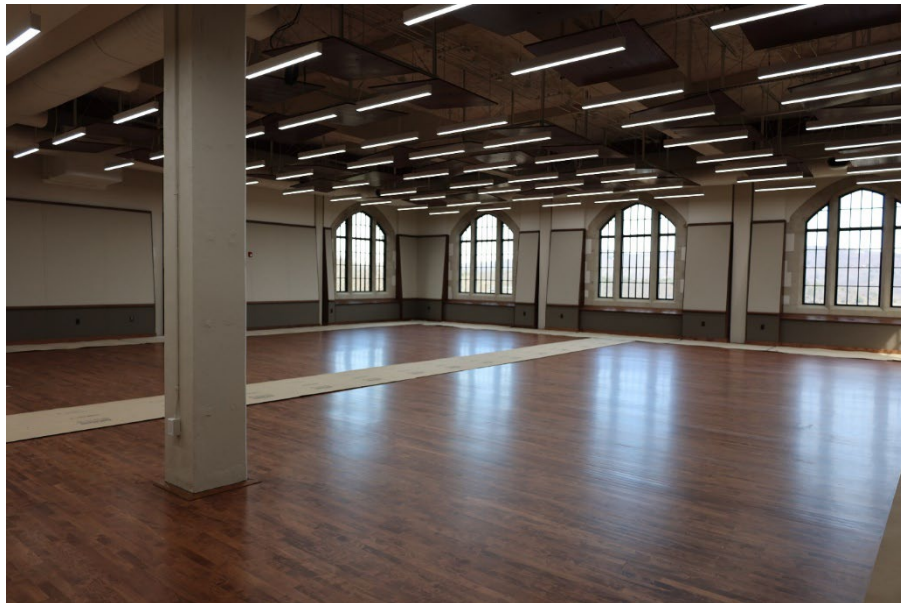
A handwritten signature in black ink that reads "Patrick O. Ortland". The signature is written in a cursive, flowing style.

Patrick O. Ortland '82
Chief Operating Officer

Serving West Point and the Long Gray Line



Glee Club Room



Band Room